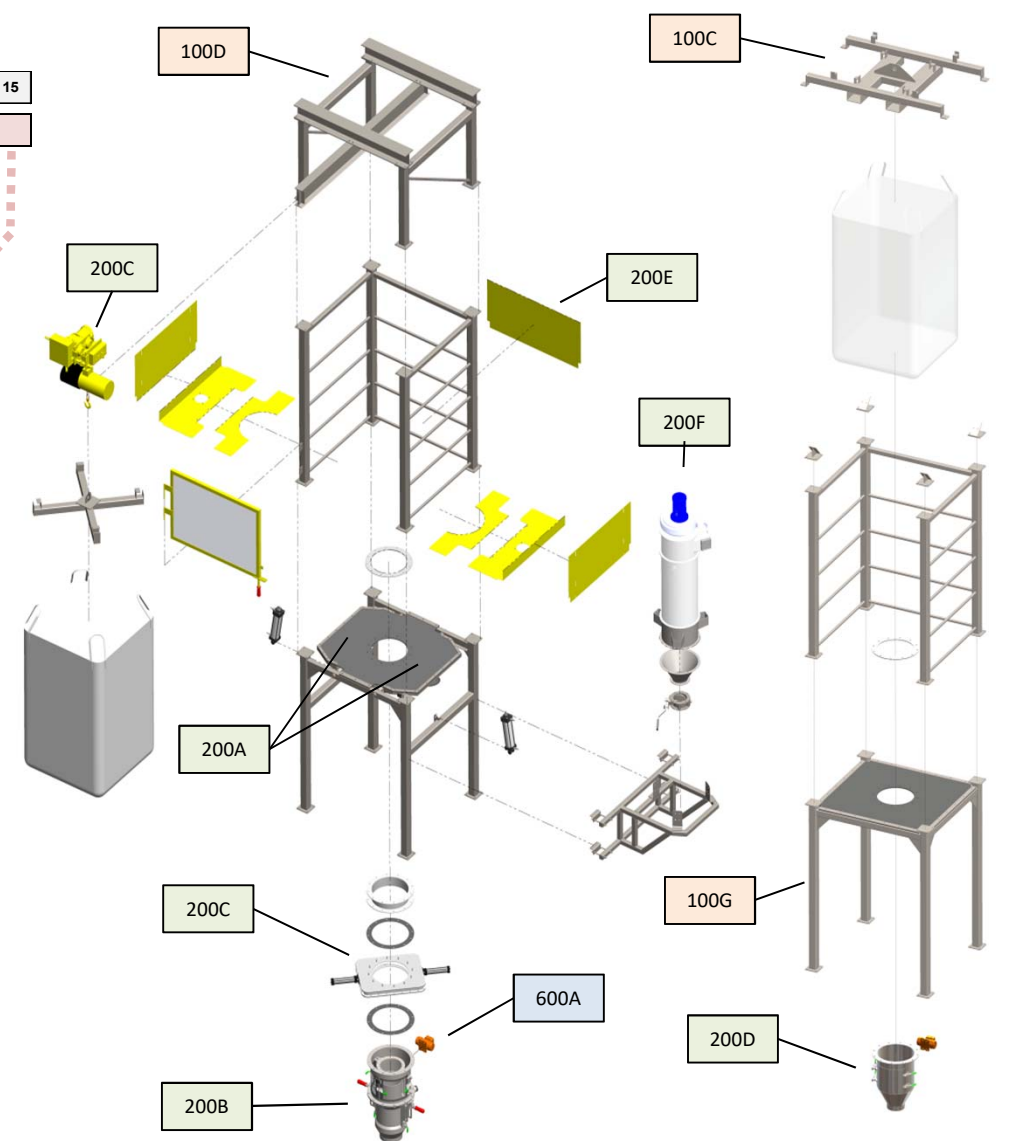


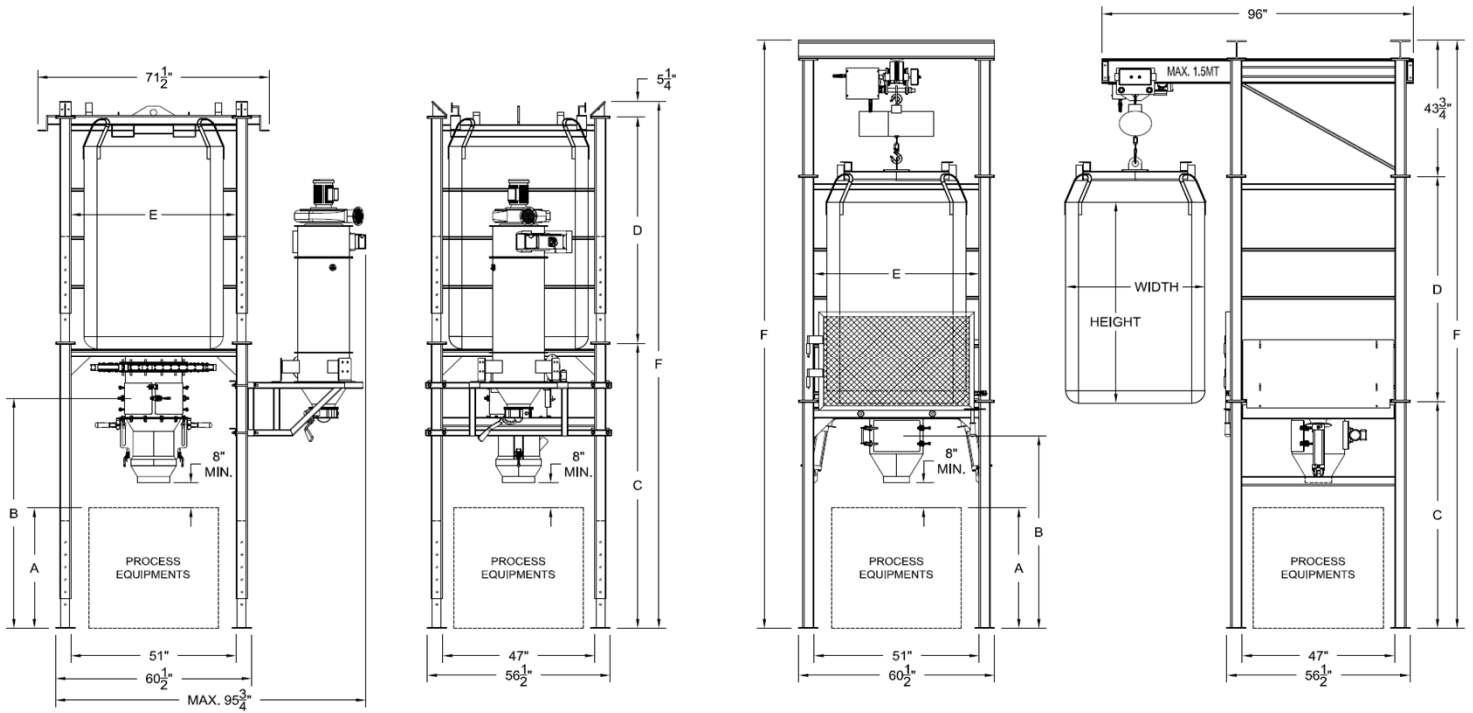
CONFIGURATION		
1	Forklift handling package for standard bulk bag Standard hoist and trolley handling unit for standard bulk bag	C D
2	Bulk bag unloader standard structure Bulk bag unloader standard structure with flexible membrane for big bag up to 48 in. width Bulk bag unloader oversized structure with flexible membrane for big bag up to 54 in. width	G W
EXCLUSIVE OPTIONS		
3	Standard bulk bag unloader access hopper Access hopper with advanced dust control	D B
4	Electric hoist & trolley Manual hoist & trolley	H I
5	Bulk bag conditioning kit Electropneumatic discharge spout closing device Integrated machine guard assembly for increased operator safety Integrated dust extraction system Valve assembly to empty residual air from the bulk bag before disposal Stabilizing legs for portable station Pneumatic panel Weather shelter	A C E F G W DD DK
6	DIS support Rotary airlock support Screw conveyor support	DE DF DG
HOPPERS / TANKS		
7	60 ft³ 100 ft³ n/a	R H 9
INSTRUMENTS		
8	Solids level sensor - vibrating rod type Door closing safety switch Load cell kit with sumbox n/a	A E J 9

CERTIFICATION / CLASSIFICATION		
A	FDA	15
B	Class 2, division 2	
C	Class 1, division 1	
F	Non-classified	
CONTROL PANEL		
E	Local control panel	14
9	n/a	
MATERIAL / FINISH / COATING		
1	Glass bead polished - exterior only	
2	Glass bead polished - exterior and interior	
3	Glass bead polished - interior only	
5	Number 4 polish on welds in contact with the product	
N	2B surface finish No stainless steel surface finish required	
E	EC1 epoxy coating system	12
H	PC1 polyurethane coating system	
K	FC1 FDA epoxy coating system	
M	without paint	
O	Carbon steel for surfaces in contact with product	11
P	304L stainless steel for surfaces in contact with product	
Q	316 stainless steel for surfaces in contact with product	
A	Carbon steel construction	10
B	304L stainless steel construction	
C	316 stainless steel construction	
EXTRACTOR / VIBRATOR		
A	Electric motorvibrator, 115V/1/60Hz	9
B	Electric motorvibrator, 460V/3/60 Hz	
C	Electric motorvibrator, 600V/3/60 Hz	
E	Electric motorvibrator, 380V/3/50-60Hz	
D	Pneumatic vibrator	
9	n/a	



1	<p>Forklift handling package (100C) Hoist & trolley unit (100D)</p>	2	<p>Oversized bulk bag structure (100CW) Standard bulk bag structure (100CG)</p>	5	<p>Bulk bag conditioning kit (200A) Integrated machine guard assembly (200E) Dust extraction system (200F) Pneumatic local panel (200DD) Stabilizing legs for portable station (200W) Bulk bag discharge spout closing device (200C) Weather shelter (200DK)</p>	4	<p>Manual hoist & trolley (200I) Electric hoist & trolley (200H)</p>	8	<p>Door safety switch (500E) Soliphant level switch (500A) Load cells & sum box (500J)</p>	7	<p>60 ft³ storage hopper (200R)</p>
3	<p>Standard access hopper (200D) Advanced dust control access hopper (200B)</p>	6	<p>Make down system support (D.I.S.) (200DE) Screw conveyor & pneumatic transfer support (200DF)</p>	9	<p>Electric motorvibrator (600A, B, C, E) Pneumatic vibrator (600D)</p>						

"BBU" GENERAL SPECIFICATIONS CHART



		BULK BAG STATION DIMENSIONS												BAG DIMENSIONS				TO CONSL			
		PROCESS EQUIPMENT "A"		ACCESS HOPPER DOOR "B"		BOTTOM STRUCTURE "C"		BULK BAG STRUCTURE "D"		BULK BAG STRUCTURE INSIDE WIDTH "E"		OVERALL HEIGHT "F"		MAX. WIDTH (in.)		MAX. HEIGHT (in.)		AIR			
		in.	mm	in.	mm	in.	mm	in.	mm	in.	mm	in.	mm	in.	mm	in.	mm	CFM	F		
FORK LIFT MODELS	STD. ACCESS HOPPER	ELECTRIC MOTOVIBRATOR	BBU-100C.G-200D-600A	32	813	55	1399	66	1678	73	1848	51	1295	145	3672	48	1219	65	1651	-	
		BAG CONDITIONING KIT ELECTRIC MOTOVIBRATOR	BBU-100C.G-200D.A+E-600A	32	813	55	1399	69	1741	73	1848	51	1295	147	3735	48	1219	65	1651	1	
		SPOUT CLOSING DEVICE BAG CONDITIONING KIT ELECTRIC MOTOVIBRATOR	BBU-100C.G-200D.A+C+E-600A	32	813	55	1399	76	1922	73	1848	51	1295	154	3916	48	1219	65	1651	2	
	DUST TIGHT ACCESS HOPPER	SPOUT CLOSING DEVICE BAG CONDITIONING KIT DUST EXTRACTION SYSTEM PNEUMATIC VIBRATOR	BBU-100C.G-200D.A+C+E+F+G-600D	32	813	55	1399	76	1922	73	1848	51	1295	154	3916	48	1219	65	1651	6	
		DUST EXTRACTION SYSTEM ELECTRIC MOTOVIBRATOR	BBU-100C.G-200B.F+G-600D	32	813	67	1705	78	1984	73	1848	51	1295	157	3978	48	1219	65	1651	5	
		BAG CONDITIONING KIT DUST EXTRACTION SYSTEM ELECTRIC MOTOVIBRATOR	BBU-100C.G-200B.A+C+E+F+G-600D	32	813	67	1705	81	2048	73	1848	51	1295	159	4042	48	1219	65	1651	6	
HOIST MODELS	STD. ACCESS HOPPER	SPOUT CLOSING DEVICE BAG CONDITIONING KIT ELECTRIC MOTOVIBRATOR	BBU-100C.G-200B.A+C+E+F+G-600D	32	813	67	1705	88	2229	73	1848	51	1295	166	4223	48	1219	65	1651	7	
		ELECTRIC MOTOVIBRATOR	BBU-100D.G-200H.D-600A	32	813	55	1399	66	1678	79	2013	51	1295	189	4802	48	1219	65	1651	-	
		BAG CONDITIONING KIT ELECTRIC MOTOVIBRATOR	BBU-100D.G-200H.D.A+E-600A	32	813	55	1399	69	1741	79	2013	51	1295	192	4866	48	1219	65	1651	1	
	DUST TIGHT ACCESS HOPPER	SPOUT CLOSING DEVICE BAG CONDITIONING KIT ELECTRIC MOTOVIBRATOR	BBU-100D.G-200H.D.A+C+E-600A	32	813	55	1399	76	1922	79	2013	51	1295	199	5047	48	1219	65	1651	2	
		SPOUT CLOSING DEVICE BAG CONDITIONING KIT DUST EXTRACTION SYSTEM PNEUMATIC VIBRATOR	BBU-100D.G-200H.D.A+C+E+F+G-600D	32	813	55	1399	76	1922	79	2013	51	1295	199	5047	48	1219	65	1651	6	
		DUST EXTRACTION SYSTEM ELECTRIC MOTOVIBRATOR	BBU-100D.G-200H.B.F+G-600D	32	813	67	1705	78	1984	79	2013	51	1295	201	5109	48	1219	65	1651	5	
DUST TIGHT ACCESS HOPPER	BAG CONDITIONING KIT DUST EXTRACTION SYSTEM ELECTRIC MOTOVIBRATOR	BBU-100D.G-200H.B.A+E+F+G-600D	32	813	67	1705	81	2048	79	2013	51	1295	204	5172	48	1219	65	1651	6		
	SPOUT CLOSING DEVICE BAG CONDITIONING KIT DUST EXTRACTION SYSTEM ELECTRIC VIBRATOR	BBU-100D.G-200H.B.A+C+E+F+G-600D	32	813	67	1705	88	2229	79	2013	51	1295	211	5353	48	1219	65	1651	7		

 : According to your application

DUST TIGHT AND PRODUCT LOSS SOLUTION

Vibrating access hopper

Not only the hopper allows the connection with the discharge of the flexible container and your process equipments it offers all the features that you expect to find on such a device, it is, in addition, equipped with an air or electric vibrator. The action of these vibrators allows an optimal fluidity in the critical transition zone between the storage part (upper part) and the process (lower part). This optimized fluidization ensures a continuous and constant supply to the process.



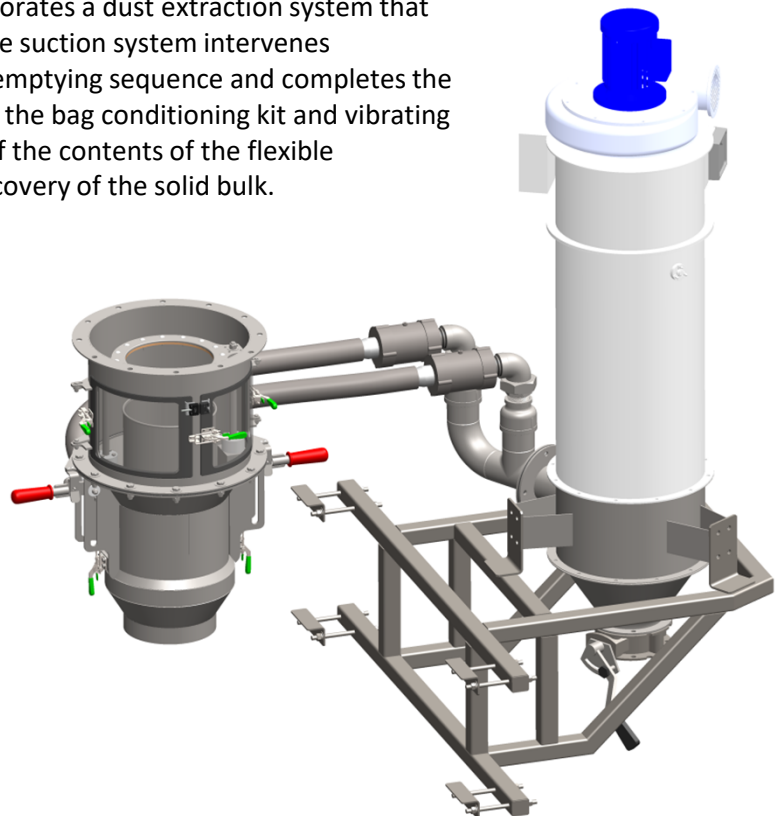
Conditioning kit

A bag bottom massage system fluidizes the compacted materials allowing their free flow. This simple and reliable system, is designed to support and fluidize the contents of the heavier flexible containers!



Dust extraction system

The CON-V-AIR bulk bag unloader "BBU" incorporates a dust extraction system that provides a cleaner work environment. This same suction system intervenes intensively at the end of the flexible container emptying sequence and completes the cycle. Once the bag is effectively emptied using the bag conditioning kit and vibrating hopper, the suction system removes as much of the contents of the flexible container as possible, thus ensuring optimal recovery of the solid bulk.



DUST TIGHT ACCESS HOPPER FUNCTIONALITY



1. Unlatch 3x toggle clamps to open both access doors



2. Spread the bulk bag's discharge spout over sealing stub



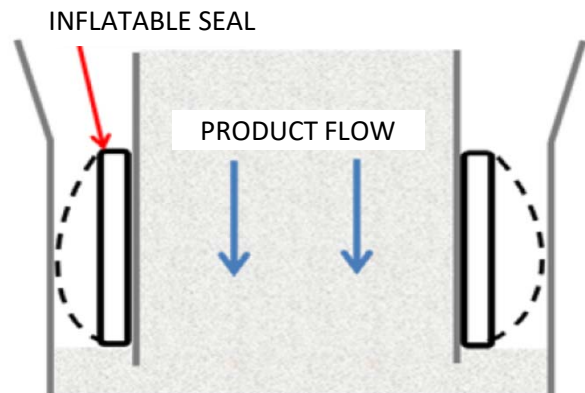
3. Pull both exterior handles to seal the spout



4. Lock sealing device with both toggle clamps

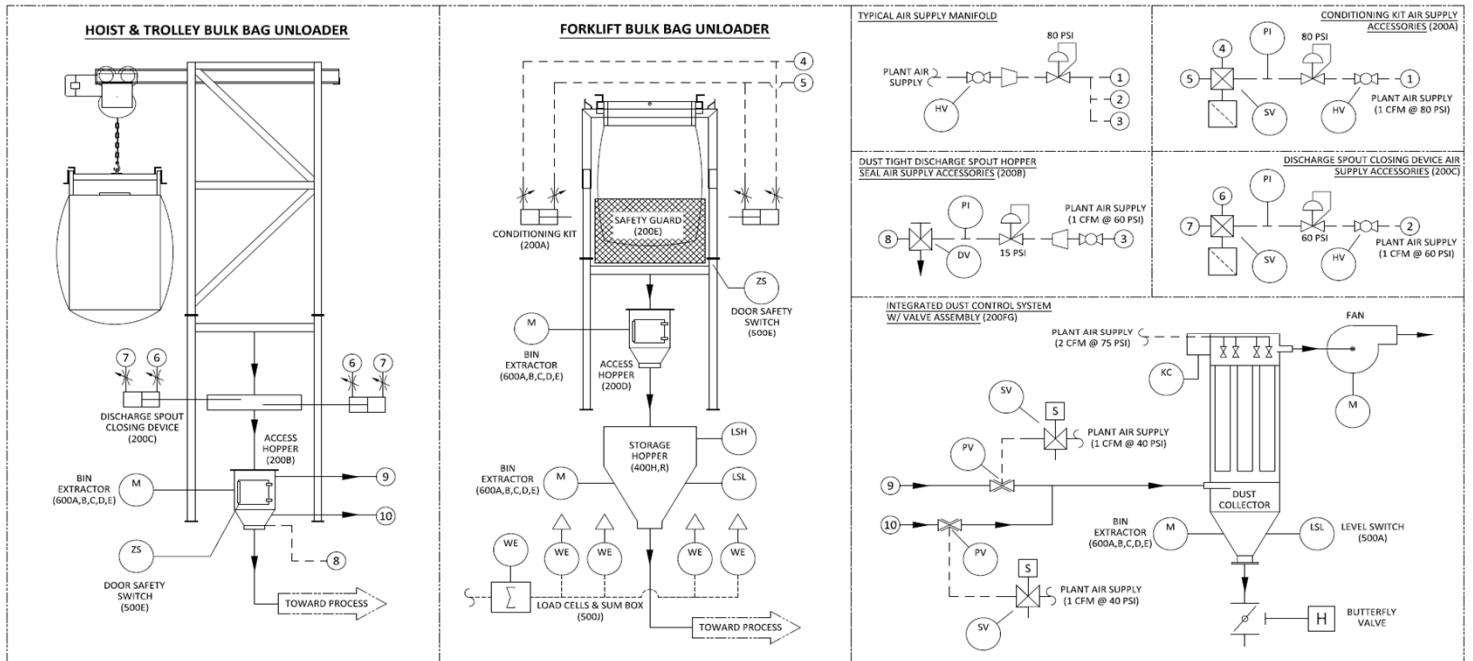


5. Untie bulk bag's discharge spout knot to let product flow freely



6. Get the most product with the inflatable seal and the dust collector system.

"BBU" PROCESS & INSTRUMENTATIONS DIAGRAM



TYPICAL "BBU" SYSTEM



RELATED CON-V-AIR EQUIPMENTS

- Screw conveyor "CON"
- Wetting cone "WCC"

- Screw feeder "SCF"
- Double wall wetting cone "WCD"

- Big screw feeder "BSF"
- Hydro-injector FLEXTURI "FLX"

CONTACT INFORMATIONS

ENGINEERING & ASSEMBLY



CON-V-AIR inc.

3510, 1ère rue
Saint-Hubert, QC
J3Y 8Y5 Canada

Sales department

info@con-v-air.com
T : 1 (450) 462-5959
F : 1 (450) 462-0756



FABRICATION PLANT



CAMFAB inc.

1191, rue Nobel
Sainte-Julie QC
J3E 1Z4 Canada

Sales department

info@camfab.ca
T : 1 (450) 649-6571

